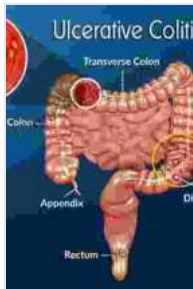


Ulcerative Colitis Updates in Surgery: A Comprehensive Guide for Surgeons

Ulcerative colitis (UC) is a chronic inflammatory bowel disease that primarily affects the colon. While medical management is often the first line of treatment, surgery may become necessary in certain cases. This comprehensive guide provides an in-depth overview of the latest surgical updates for UC, offering valuable insights for surgeons in effectively managing this condition.



Ulcerative Colitis (Updates in Surgery) by Kathleen M. Ryan

★★★★★ 5 out of 5

Language : English
File size : 3005 KB
Text-to-Speech : Enabled
Enhanced typesetting : Enabled
Print length : 326 pages
Screen Reader : Supported



Surgical Options for Ulcerative Colitis

The decision to perform surgery for UC depends on factors such as disease severity, medical therapy response, and patient preferences. The main surgical options include:

- **Colectomy:** Removal of the entire colon.
- **Ileostomy:** Creation of an opening in the abdomen through which stool exits into a bag.

- **Kock Pouch:** A surgical procedure that creates a reservoir from part of the small intestine to store stool, allowing for less frequent bowel movements.
- **J-Pouch:** A surgical procedure that creates a J-shaped pouch from part of the small intestine to store stool, allowing for normal bowel function.

Preoperative Assessment and Planning

Before surgery, patients undergo a thorough evaluation to determine their health status and the extent of their UC. This includes medical history, physical examination, laboratory tests, and imaging studies. Surgeons carefully assess the severity and location of the inflammation, as well as the patient's overall condition.

Surgical Techniques

Various surgical techniques are employed for UC, each with its advantages and disadvantages. The choice of technique depends on the patient's specific情况. Common surgical procedures include:

- **Open Surgery:** Traditional surgical approach involving a long incision in the abdomen.
- **Laparoscopic Surgery:** Minimally invasive surgery performed through small incisions in the abdomen using specialized instruments.
- **Robotic-Assisted Surgery:** Similar to laparoscopic surgery, but with enhanced precision and control provided by robotic assistance.

Post-Operative Care

After surgery, patients are closely monitored in the hospital for any complications. Post-operative care typically involves:

- Pain management
- Wound care
- Dietary modifications
- Medication for inflammation and infection
- Physical therapy to regain mobility

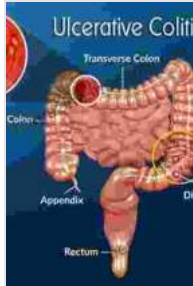
Long-Term Outcomes

The long-term outcomes of UC surgery generally depend on the type of procedure performed and the patient's individual response. Most patients experience significant improvement in their symptoms and quality of life after surgery.

- **Colectomy:** Can provide a permanent cure for UC in most cases.
- **Ileostomy:** Requires a permanent appliance to collect stool, but offers a reliable solution for severe UC.
- **Kock Pouch:** Can provide excellent functional outcomes, but requires regular follow-up and maintenance.
- **J-Pouch:** Can restore near-normal bowel function, but may require occasional medical interventions.

Surgery plays a crucial role in the management of ulcerative colitis, offering patients relief from debilitating symptoms and improved quality of life. This comprehensive guide provides up-to-date information on the latest surgical

techniques, pre- and post-operative care, and long-term outcomes. By staying informed on the advancements in UC surgery, surgeons can effectively treat this condition and enhance patient outcomes.



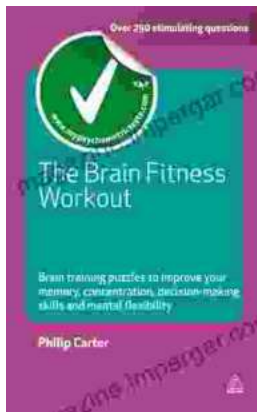
Ulcerative Colitis (Updates in Surgery) by Kathleen M. Ryan

★★★★★ 5 out of 5

Language : English
File size : 3005 KB
Text-to-Speech : Enabled
Enhanced typesetting : Enabled
Print length : 326 pages
Screen Reader : Supported

FREE

DOWNLOAD E-BOOK



Unlock Your Cognitive Potential: Embark on a Brain Fitness Journey with "The Brain Fitness Workout"

"The Brain Fitness Workout" transcends traditional brain training methods by adopting a comprehensive approach that encompasses the entire spectrum of cognitive...



Lady Churchill's Rosebud Wristlet No. 33: A Timeless Heirloom

Embrace the Legacy of a Remarkable Woman Immerse yourself in the captivating tale of Lady Churchill, a woman of unwavering strength and style. Her exquisite Rosebud Wristlet...

